



# Compact Vise with Machinable Jaws

for 5-axis machining applications and machining centers with a smaller work envelope

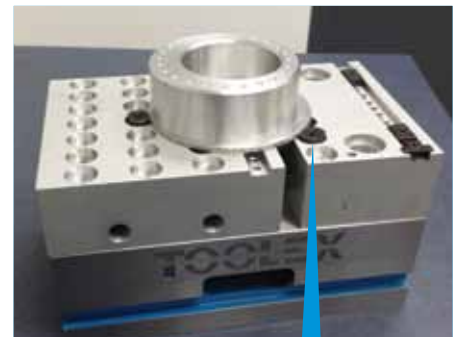


- Vise repeatability = +/- .0005!
- Jaws available in aluminum and 4140 Steel

- Vise body and segment assembly manufactured from 4140 hardened steel for maximum rigidity, accuracy and clamping pressure.
- Machinable jaws allow maximum part contact – ensuring a rigid, accurate workholding fixture.
- Vise accepts Toolex® SnapLock Jaws for maximum flexibility and reduced set-up time
- Tool kit included: vise handle, pry wrench and hex key(s).
- Clamping Pressures: 4" up to 6,000 lbs.; 6" up to 12,000 lbs.
- Solid end construction eliminates jaw lift on fixed jaw end.



*Jaws can be changed in seconds, greatly improving your efficiency and reducing set-up time. Also available in extra tall and wide configurations.*



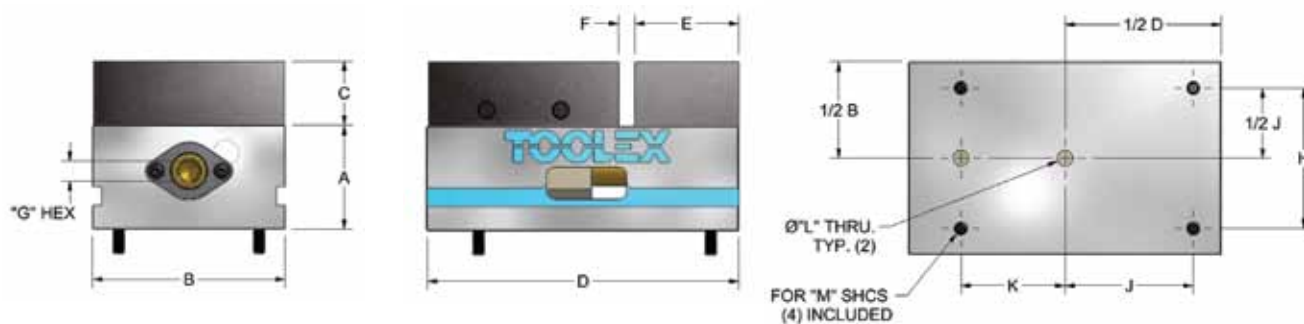
Maximize workholding by using Mitee-Bite® TalonGrip™ and VersaGrip™ clamps with your SnapLock Jaws. Perform aggressive machining operations while clamping on as little as .060" of an inch.



*Thru-body mounting eliminates need for clamping outside the body. Drainage slots evacuate coolant and chips, keeping the segment screw free of debris.*

**800-543-4071**    **www.te-co.com**

109 Quinter Farm Road    Union, OH 45322



**Vise only**

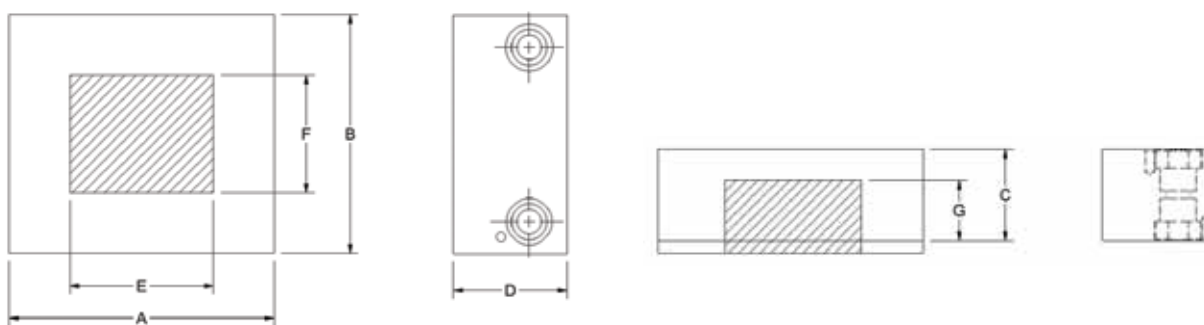
Vise Size	Part Number	A	B	C	D	E	F	G	H	J	K	L	M
4"	RWS405X	2.500	4.000	-	6.650	-	-	0.500	2.875	2.625	2.000	0.501	.312-18
6"	RWS605X	3.250	6.000	-	9.750	-	-	0.625	4.375	4.000	3.250	0.501	.375-16

**Vise with Steel Machinable Jaws**

Vise Size	Part Number	A	B	C	D	E	F	G	H	J	K	L	M	Jaw Set No.
4"	RWS405XST	2.500	4.000	1.500	6.650	1.875	0.350	0.500	2.875	2.625	2.000	0.501	.312-18	SSJ415X
6"	RWS605XST	3.250	6.000	2.000	9.750	3.250	0.500	0.625	4.375	4.000	3.250	0.501	.375-16	SSJ615X

**Vise with Aluminum Machinable Jaws**

Vise Size	Part Number	A	B	C	D	E	F	G	H	J	K	L	M	Jaw Set No.
4"	RWS405XAL	2.500	4.000	1.500	6.650	1.875	0.350	0.500	2.875	2.625	2.000	0.501	.312-18	SSJ405X
6"	RWS605XAL	3.250	6.000	2.000	9.750	3.250	0.500	0.625	4.375	4.000	3.250	0.501	.375-16	SSJ605X



**Jaw Sets**

Vise Size	Part Desc.	PART NUMBER		A	B	C	D	E	F	G
		Aluminum	4140 Steel							
4"	2-pc. Set	SSJ405X	SSJ415X	4.250	3.94	1.500	1.875	2.250	2.060	1.060
4"	Movable Jaw	SSJ4200	SSJ4024	4.250	3.94	1.500	-	2.250	2.060	1.060
4"	Fixed Jaw	SSJ4027	SSJ4025	-	3.94	1.500	1.875	-	-	-
6"	2-pc. Set	SSJ605X	SSJ615X	5.812	5.94	2.000	3.250	3.063	2.810	1.280
6"	Movable Jaw	SSJ6200	SSJ6024	5.812	5.94	2.000	-	3.063	2.810	1.280
6"	Fixed Jaw	SSJ6027	SSJ6025	-	5.94	2.000	3.250	-	-	-

**800-543-4071**

**www.te-co.com**